

Questionnaire development to assess inclusion processes in badminton sport entities at European level. “Badminton for All” Project

Andrea Gutiérrez, Javier Pérez-Tejero, Carmen Ocete,
Javier Coterón

“Sanitas Foundation” Chair about Inclusive Sport Studies, Faculty of Physical Activity and Sport Sciences. Technical University of Madrid

VISTA 2019, Amsterdam. 5th September 2019



Co-funded by the
Erasmus+ Programme
of the European Union



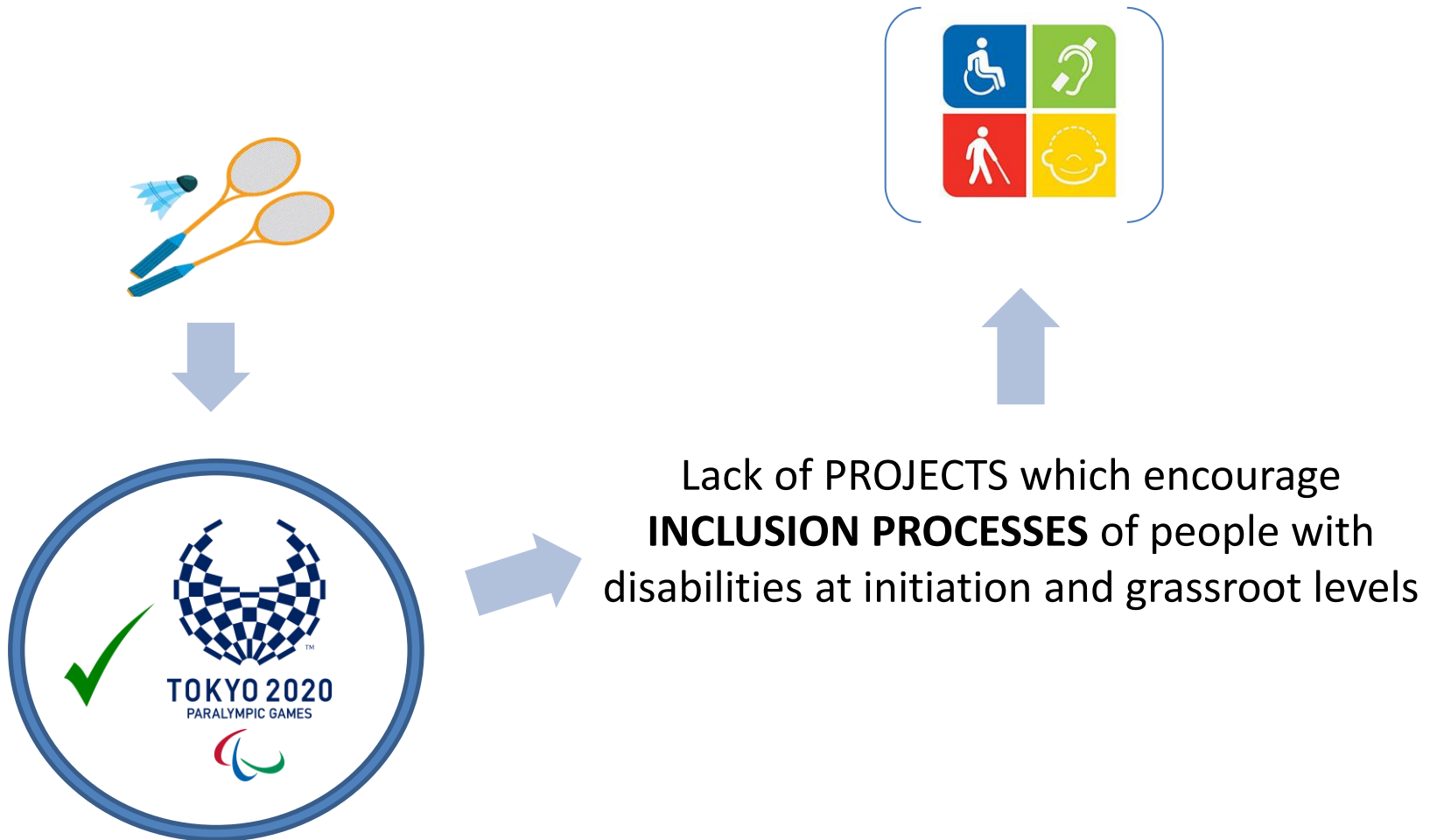


Co-funded by the
Erasmus+ Programme
of the European Union



B4ALL - Badminton for All Erasmus+ Sport 2018-2020
European Network for the Promotion of Inclusive Badminton

1. BACKGROUND





Co-funded by the Erasmus+ Programme of the European Union



B4ALL - Badminton for All Erasmus+ Sport 2018-2020
European Network for the Promotion of Inclusive Badminton

1. BACKGROUND



Badminton for All Erasmus+ Sport 2018/2020

European Network for the Promotion of Inclusive Badminton





Co-funded by the
Erasmus+ Programme
of the European Union



B4ALL - Badminton for All Erasmus+ Sport 2018-2020
European Network for the Promotion of Inclusive Badminton

1. BACKGROUND

Coordinating Entity
Spanish Badminton Federation

Partners Organisation
Spain, France, Italy, Finland, Denmark, United Kingdom

**National European
Badminton Federations**

**F d ration
Fran aise de
Badminton FFBAD**

**Federazione
Italiana Badminton
FIBa**

**Suomen
Sulkapaliitto
BF**

Universities

**Universidad
Polit cnica de
Madrid UPM**

**University of Kent
UKent**

Badminton clubs

**Club de B dminton
Chamart n CBCHAM**

**Institutional
collaboration**

**Spanish High
Sports Council-
CSD**

**Spanish
Paralympic
Committee-
CPE**

**European
Badminton
Federation**



Co-funded by the
Erasmus+ Programme
of the European Union



B4ALL - Badminton for All Erasmus+ Sport 2018-2020
European Network for the Promotion of Inclusive Badminton

1. BACKGROUND

WHAT IS B4ALL?

- ✓ An integrating and innovative approach to grassroots sport and its transition to competition for people with disabilities.
- ✓ An instrument to disseminate and recommend necessary adaptations for the inclusion of people with disabilities in the practice of badminton.
- ✓ A program that will have effects into the European participation on the next Paralympic Games.



Co-funded by the
Erasmus+ Programme
of the European Union



B4ALL - Badminton for All Erasmus+ Sport 2018-2020
European Network for the Promotion of Inclusive Badminton

1. BACKGROUND

1st PHASE

Analyze the current status of
INCLUSION PROCESSES

3rd PHASE

Inclusive practical strategies of
badminton

2nd PHASE

Specific online training development
(EQF)



Co-funded by the
Erasmus+ Programme
of the European Union



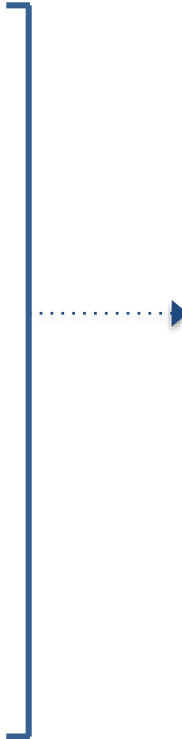
B4ALL - Badminton for All Erasmus+ Sport 2018-2020
European Network for the Promotion of Inclusive Badminton

1. BACKGROUND

INCLUSION
PROCESSES IN
EUROPEAN
BADMINTON ENTITIES



¿ MEASUREMENT TOOLS ?



QUESTIONNAIRE

The processes of inclusion in sport:
the case of badminton.
International Project B4All





Co-funded by the
Erasmus+ Programme
of the European Union



B4ALL - Badminton for All Erasmus+ Sport 2018-2020
European Network for the Promotion of Inclusive Badminton

2. OBJECTIVES

**To develop and validate an assessment tool of the inclusion processes
in badminton sport entities.**



To analyze the current situation regarding these entities.



3. METHODS: DESIGN AND VALIDATION PROCESS

- ✓ Revision by 9 EXPERTS in the field of quantitative and qualitative methodology

Phd. University Professor. Badminton experts (n=3)

Badminton Manager & Coach (n=3)

PhD. University Professor. Qualitative expert's research (n=3)

- ✓ Pilot questionnaire to assess the quality of the design



Co-funded by the
Erasmus+ Programme
of the European Union



B4ALL - Badminton for All Erasmus+ Sport 2018-2020
European Network for the Promotion of Inclusive Badminton

3. METHODS: STRUCTURE

SECTION	COMPONENTS	N ^{ER} ITEMS	EXAMPLE
1. Sociodemographic data		12	"Number of athletes with disability in the entity"
2. Level of importance Status and availability	Accessibility	6	"Accessibility to facilities (changing rooms and showers, common areas, etc.)"
	Formation/training	10	"Specific training in "inclusive badminton" for volunteers"
	Institutional support	18	"Promotion: role of the national Federation of badminton (development of specific plans to promote the inclusion of people with disabilities in badminton, etc.)"
Influence of inclusion processes	Opinion regarding future inclusive situations in the entity	8	"If a person with disability participates in the activities of our club, it would help to improve the social recognition and visibility of badminton"
3. Open questions	General assessment of the inclusion processes in the clubs	4	"Influence of inclusion processes in adapted modalities in badminton"





Co-funded by the
Erasmus+ Programme
of the European Union



B4ALL - Badminton for All Erasmus+ Sport 2018-2020
European Network for the Promotion of Inclusive Badminton

3. METHODS: STRUCTURE

SECTION	COMPONENTS	N ^{ER} ITEMS	EXAMPLE
1. Sociodemographic data		12	"Number of athletes with disability in the entity"
2. Level of importance Status and availability	Accessibility	6	"Accessibility to facilities (changing rooms and showers, common areas, etc.)"
	Formation/training	10	"Specific training in "inclusive badminton" for volunteers"
	Institutional support	18	"Promotion: role of the national Federation of badminton (development of specific plans to promote the inclusion of people with disabilities in badminton, etc.)"
Influence of inclusion processes	Opinion regarding future inclusive situations in the entity	8	"If a person with disability participates in the activities of our club, it would help to improve the social recognition and visibility of badminton"
3. Open questions	General assessment of the inclusion processes in the clubs	4	"Influence of inclusion processes in adapted modalities in badminton"





3. METHODS: STRUCTURE

SECTION	COMPONENTS	N ^{ER} ITEMS	EXAMPLE
1. Sociodemographic data		12	"Number of athletes with disability in the entity"
2. Level of importance Status and availability	Accessibility	6	"Accessibility to facilities (changing rooms and showers, common areas, etc.)"
	Formation/training	10	"Specific training in "inclusive badminton" for volunteers"
	Institutional support	18	"Promotion: role of the national Federation of badminton (development of specific plans to promote the inclusion of people with disabilities in badminton, etc.)"
Influence of inclusion processes	Opinion regarding future inclusive situations in the entity	8	"If a person with disability participates in the activities of our club, it would help to improve the social recognition and visibility of badminton"
3. Open questions	General assessment of the inclusion processes in the clubs	4	"Influence of inclusion processes in adapted modalities in badminton"



Co-funded by the
Erasmus+ Programme
of the European Union



B4ALL - Badminton for All Erasmus+ Sport 2018-2020
European Network for the Promotion of Inclusive Badminton

3. METHODS: TRANSLATION



Spanish



English



Italian



Finnish



French





Co-funded by the
Erasmus+ Programme
of the European Union



B4ALL - Badminton for All Erasmus+ Sport 2018-2020
European Network for the Promotion of Inclusive Badminton

4. RESULTS MONITORING : PARTICIPANTS



246

Badminton entities

(January - April 2019)

TOTAL	
Answers	%
30	19,83%
69	3,48%
49	12,28%
98	35,82%





4. RESULTS MONITORING : EXAMPLE

Respondent profile

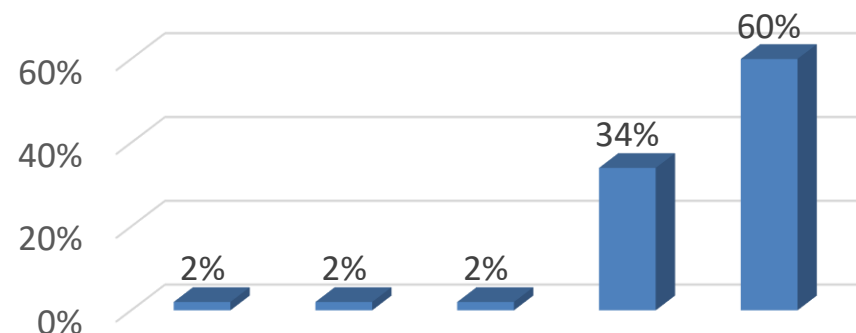
	N	%
Manager	9	9,2
Coach	56	57,1
President	33	33,7
Total	98	100,0

Current inclusive activities at the club

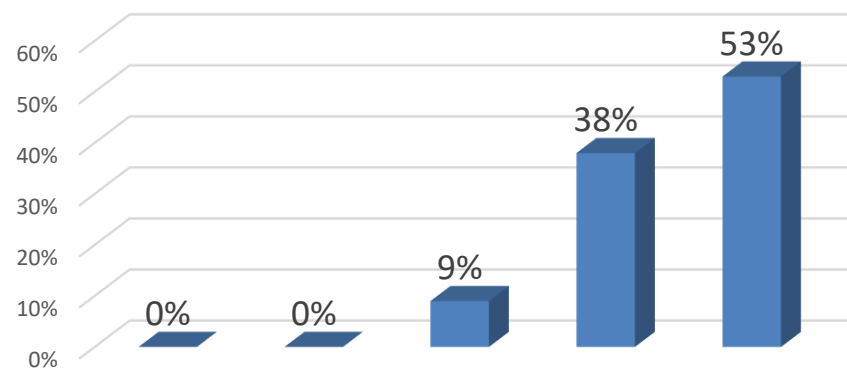
	N	%
No inclusion	36	36,7
Specific / adapted	6	6,1
Full inclusive	49	50,0
Inclusive events (1 to 5 activities/year)	7	7,1
Total	98	100,0

 (n=98)

... promote the approach of other people with disabilities to the clubs



... would require specific training of the responsible technician / manager





Co-funded by the
Erasmus+ Programme
of the European Union

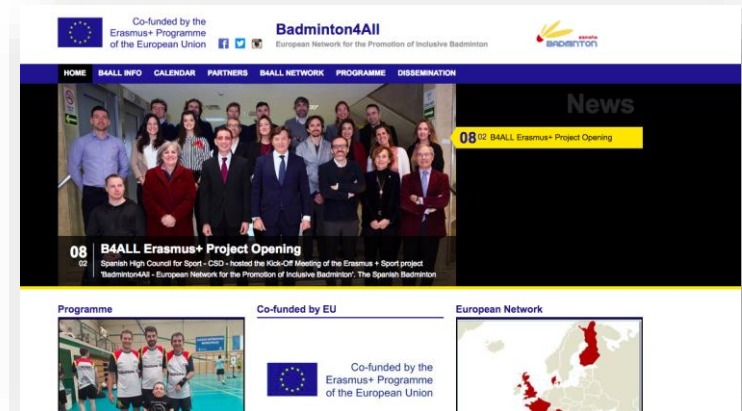


B4ALL - Badminton for All Erasmus+ Sport 2018-2020
European Network for the Promotion of Inclusive Badminton

5. CONCLUSIONS

- The tool seems appropriated to analyze the situation of the inclusion processes
- At this moment we are gathering all the information to start the training strategies and consider the real impact from B4ALL in the future

<http://www.b4all.badminton.es/>



Questionnaire development to assess inclusion processes in
badminton sport entities at European level. “Badminton for All”
Project

**THANK YOU FOR YOUR
ATTENTION**

andrea.gutierrez@udc.es

Andrea Gutiérrez, Javier Pérez-Tejero, Carmen Ocete, Javier Coterón

“Sanitas Foundation” Chair about Inclusive Sport Studies, Faculty of Physical Activity and Sport
Sciences. Technical University of Madrid



Co-funded by the
Erasmus+ Programme
of the European Union

